

Employment and unemployment

> Employment

Employment Structure in 2003

	Île-de-France		Activity rate	
	Number of persons	Structure	Île-de-France	Province
Employed active population	4 761 000	100,0 %	-	-
Males	2 514 000	52,8 %	66,7 %	61,3 %
Females	2 247 000	47,2 %	54,3 %	47,7 %
Less than 25 years	331 000	7,0 %	29,2 %	34,9 %
25 to 49 years	3 265 000	68,6 %	87,8 %	87,4 %
50 years or more	1 165 000	24,5 %	39,3 %	29,2 %
Self-employed persons	347 000	7,3 %	-	-
Employed persons	4 414 000	92,7 %	-	-
<i>including precarious jobs</i>	448 000	10,1 %	-	-
-fixed term contract + temporary work	358 000	79,9 %	-	-
-apprentice, training and supported contracts	90 000	20,1 %	-	-
<i>including stable jobs</i>	3 966 000	89,9 %	-	-
- out of State, local authorities	3 020 000	76,1 %	-	-
- State and local authorities	946 000	23,9 %	-	-
Craftsmen, tradesmen	208 000	4,4 %	-	-
Managers and post-graduate professions	1 254 000	26,4 %	-	-
Intermediate Professions	1 163 000	24,4 %	-	-
Employees	1 394 000	29,3 %	-	-
Manual workers	728 000	15,3 %	-	-
Others	14 000	0,3 %	-	-
Agriculture + unspecified	48 000	1,0 %	-	-
Industry	542 000	11,4 %	-	-
Construction	235 000	4,9 %	-	-
Tertiary	3 936 000	82,7 %	-	-

Source : INSEE (French Institute of Statistics), employment survey 2003

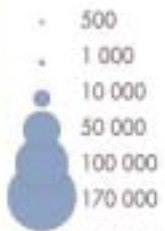
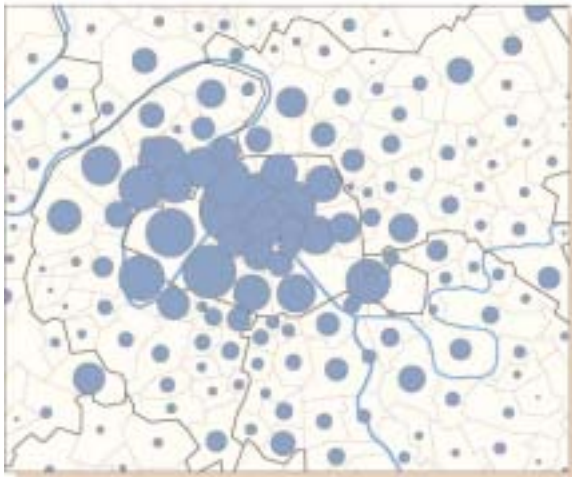
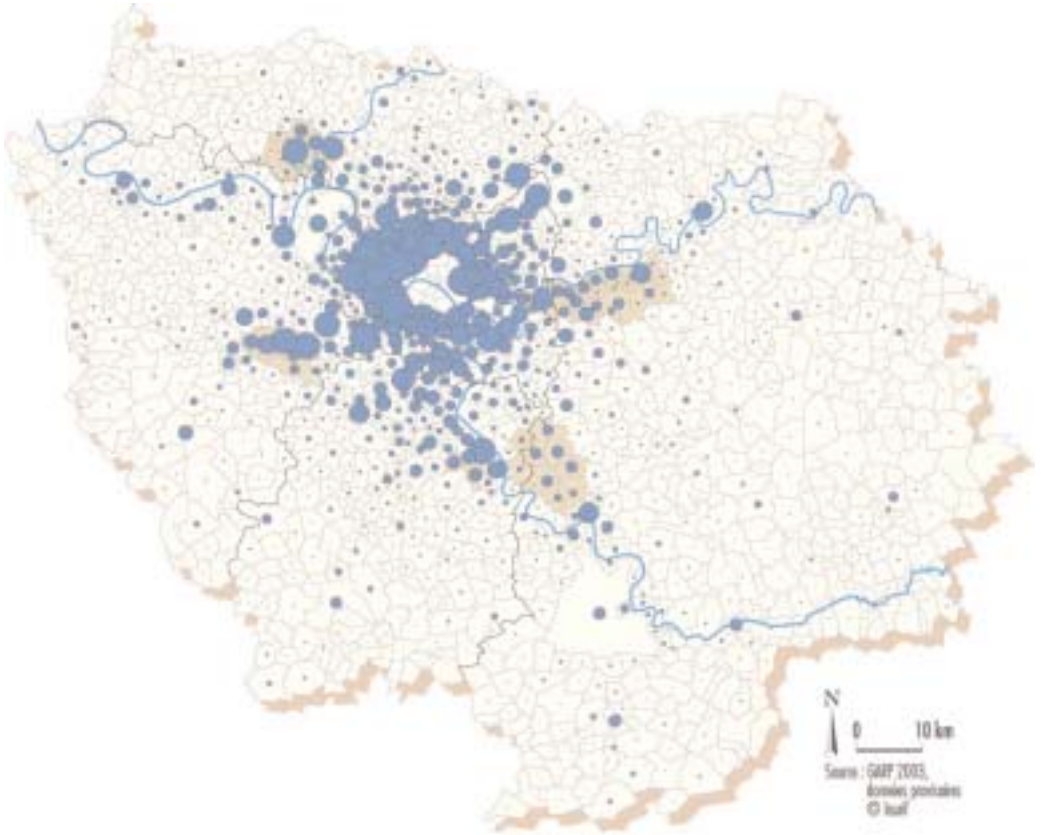
Labour Force in the Île-de-France Region in 2003

(Structure in %)

	Farmers	Craftsmen, tradesmen, Company managers	Managers, Post-graduate professions	Intermediate professions	Non manual workers	Manual workers	TOTAL
Île-de-France	0,1	4,3	25,7	24,0	29,6	16,3	100,0
Males	0,2	6,2	30,7	22,0	16,1	24,8	100,0
Females	0,0	2,1	20,1	26,3	44,8	6,7	100,0
Province	3,5	6,2	10,8	22,2	29,2	28,1	100,0
Males	4,3	7,8	13,1	21,9	11,6	41,3	100,0
Females	2,5	4,3	7,9	22,7	50,2	12,4	100,0

Source : INSEE (French Institute of Statistics), Employment survey 2003

Salaried employment in the Île-de-France region (dec-31-2003)



Labour force per municipality
Maximum labour force : 171 715

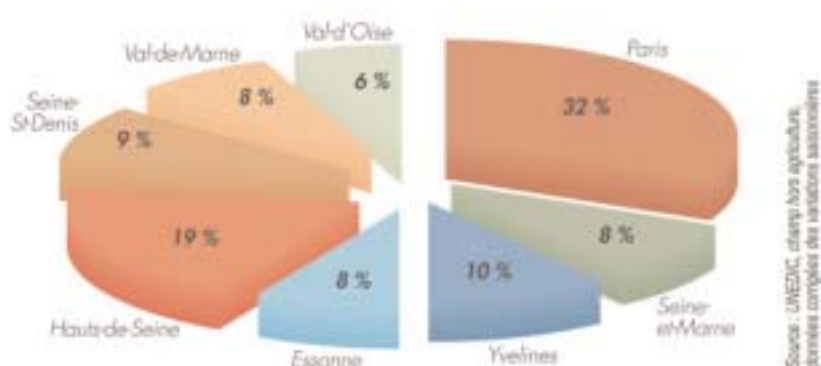
Salaried employment in the Ile-de-France "départements"

	2003			2004		Variation on	
	2nd quarter	3rd quarter	4th quarter	1st quarter	2nd quarter *	three months	one year
Paris	1 275 849	1 262 222	1 256 400	1 242 427	1 248 554	+ 0,5 %	- 2,1 %
Seine-et-Marne	297 243	296 989	298 559	303 277	300 999	- 0,8 %	+ 1,3 %
Yvelines	387 961	386 909	387 163	387 645	385 903	- 0,4 %	- 0,5 %
Essonne	287 143	290 256	290 407	292 909	293 693	+ 0,3 %	+ 2,3 %
Hauts-de-Seine	762 393	760 107	753 156	754 103	757 022	+ 0,4 %	- 0,7 %
Seine-St-Denis	349 396	351 539	349 649	352 769	353 914	+ 0,3 %	+ 1,3 %
Val-de-Marne	318 394	319 833	315 787	316 524	321 162	+ 1,5 %	+ 0,9 %
Val-d'Oise	253 099	253 727	253 699	254 260	254 026	- 0,1 %	+ 0,4 %
Île-de-France	3 931 478	3 921 582	3 904 820	3 904 019	3 915 370	+ 0,3 %	- 0,4 %
France	15 867 800	15 848 500	15 866 200	15 860 300	15 893 600	+ 0,2 %	+ 0,2 %

* Provisional data

Source : Unedic (Unemployment Insurance Scheme), field excluding agriculture, seasonally adjusted data

Distribution of wage and salary earner by "département" in the 2004 second quarter



Wage and Salary earners by activity sectors

	2003			2004		Variation on	
	2nd quarter	3rd quarter	4th quarter	1st quarter	2nd quarter*	three months	one year
Île-de-France							
Industry	584 626	583 705	575 745	572 360	569 762	- 0,5 %	- 2,6 %
Building	232 405	231 673	228 817	228 286	229 356	+ 0,5 %	- 1,3 %
Tertiary	3 114 447	3 106 204	3 100 258	3 103 373	3 116 252	+ 0,4 %	+ 0,1 %
Total	3 931 478	3 921 582	3 904 820	3 904 019	3 915 370	+ 0,3 %	- 0,4 %
Metropolitan France							
Industry	3 732 600	3 705 300	3 676 300	3 652 100	3 633 200	- 0,5 %	- 2,7 %
Building	1 261 400	1 262 600	1 263 200	1 268 900	1 272 400	+ 0,3 %	+ 0,9 %
Tertiary	10 873 800	10 880 600	10 926 700	10 939 300	10 988 000	+ 0,4 %	+ 1,1 %
Total	15 867 800	15 848 500	15 866 200	15 860 300	15 893 600	+ 0,2 %	+ 0,2 %

* Provisional data

Source : Unedic (Unemployment Insurance Scheme), field excluding agriculture, seasonally adjusted data

Distribution of the establishments and Labour force of the ITS* field in the Île-de-France Region (June-30-2004)

	Paris		Seine-et-Marne		Yvelines		Essonne		Île-de-France	
	Estab	LF	Estab	LF	Estab	LF	Estab	LF	Estab	LF
Manufacture of agricultural and food products	2 081	11 346	824	7 902	807	6 381	692	5 891	7 580	56 406
Manufacture of clothing articles and leather products	6 115	21 181	139	1 069	110	133	77	216	8 168	32 771
Publishing, printing and reproduction	8 637	44 633	530	5 095	704	1 688	533	4 150	14 517	83 313
Manufacture of pharmaceutical product, perfumes, soap and cleaning preparations	373	10 400	47	2 299	81	4 671	34	1 950	911	59 443
Manufacture of domestic equipments	2 686	7 380	472	2 932	465	5 071	328	2 758	5 704	27 234
Manufacture of motor vehicles	40	140	48	2 330	69	15 027	33	1 211	356	36 618
Building of ships and boats, manufacture of aircraft and railway	54	735	29	5 109	42	4 765	20	s	256	27 782
Manufacture of mechanical equipments	376	2 831	556	7 186	446	12 393	412	4 653	3 352	52 191
Manufacture of electric and electronic equipments	866	5 284	325	2 681	442	17 879	423	9 142	3 447	62 641
Manufacture of mineral products	267	2 123	274	5 280	148	2 273	143	1 382	1 409	17 371
Manufacture of textile products	394	1 794	35	170	53	187	42	272	950	5 554
Manufacture of wood and paper	306	1 477	156	1 871	106	771	119	1 569	1 054	10 034
Manufacture of chemical, rubber and plastic products	258	2 381	209	4 706	147	3 867	123	3 135	1 362	29 091
Metallurgy and metals transformation	464	2 816	610	8 656	452	5 644	372	4 052	3 696	40 899
Manufacture of electrical and electronic components	200	1 350	122	2 932	162	5 592	164	6 249	1 226	28 972
Production of fuel	32	312	8	507	11	91	8	76	184	2 735
Electricity and gaz supply, collection and distribution of water	861	15 212	158	3 409	158	3 508	91	2 386	2 314	53 676
Construction	16 872	38 962	6 657	26 132	6 066	34 260	5 880	26 710	61 489	256 074
Sale and repair of motor vehicles	2 146	9 287	1 579	9 309	1 643	11 194	1 459	8 381	13 474	76 654
Wholesale trade	29 294	68 928	3 877	24 739	4 623	30 011	3 690	29 512	65 006	315 279
Retail trade, repair	37 558	110 907	7 513	32 467	8 419	38 192	6 635	28 758	95 415	334 617
Transports	7 893	100 676	2 972	24 073	2 521	14 576	2 405	23 448	31 267	336 871
Real Estate activities	15 060	20 208	1 490	2 191	2 297	3 806	1 298	2 062	27 888	44 579
Post and telecommunications	1 887	47 955	537	8 602	513	12 473	395	7 368	5 880	143 324
Consultancy and assistance activities	77 631	206 757	5 480	15 900	11 095	44 104	6 679	36 246	142 753	578 061
Renting and other business activities	19 308	105 642	2 392	21 943	3 305	25 303	2 456	23 221	40 953	333 640
Research and development	564	1 707	41	87	63	991	79	3 530	1 088	12 741
Hotels and restaurants	21 185	125 785	2 948	15 280	3 542	19 145	2 687	12 915	46 336	248 089
Recreational, cultural and sporting activities	15 388	44 225	1 035	s	1 644	2 223	1 012	1 556	26 144	94 425
Personal and domestic services	6 833	14 771	1 654	3 399	1 970	5 018	1 590	3 213	19 383	41 630
Education	4 178	7 242	612	805	1 011	1 344	579	821	9 446	15 231
Health, social work activities	19 489	13 485	5 035	7 070	6 791	8 602	5 019	7 467	59 010	66 947
Activities of membership organizations and extra-territorial activities	63	108	4	s	2	s	1	s	88	119
TOTAL	299 359	1 048 040	48 368	271 650	59 908	341 184	45 478	268 190	702 106	3 525 012

* ITS : Industry, Trade, Services (excluding financial activities)

s : statistical confidentiality

Source : INSEE (French Institute of Statistics), Sirene file

Distribution of the establishments and Labour force of the ITS* field in the Île-de-France Region (June-30-2004)

	Hauts-de-Seine		Seine-St-Denis		Val-de-Marne		Val d'Oise		Île-de-France	
	Estab	LF	Estab	LF	Estab	LF	Estab	LF	Estab	LF
Manufacture of agricultural and food products	886	9 601	860	4 382	793	6 808	637	4 095	7 580	56 406
Manufacture of clothing articles and leather products	174	1 046	1 119	6 836	242	1 400	192	890	8 168	32 771
Publishing, printing and reproduction	1 855	14 704	948	6 711	822	3 885	488	2 447	14 517	83 313
Manufacture of pharmaceutical product, perfumes, soap and cleaning preparations	221	27 751	53	5 411	55	4 855	47	2 106	911	59 443
Manufacture of domestic equipments	549	2 547	412	1 838	465	2 958	327	1 750	5 704	27 234
Manufacture of motor vehicles	62	13 418	30	1 068	19	948	55	2 476	356	36 618
Building of ships and boats, manufacture of aircraft and railway	46	7 377	19	2 831	18	263	28	2 812	256	27 782
Manufacture of mechanical equipments	318	9 138	420	6 244	356	4 399	468	5 347	3 352	52 191
Manufacture of electric and electronic equipments	443	14 499	302	4 659	342	3 515	304	4 982	3 447	62 641
Manufacture of mineral products	159	1 485	154	1 833	166	1 851	98	1 144	1 409	17 371
Manufacture of textile products	205	1 349	92	701	87	309	42	772	950	5 554
Manufacture of wood and paper	88	1 171	113	1 523	84	697	82	955	1 054	10 034
Manufacture of chemical, rubber and plastic products	211	5 448	134	1 794	118	1 884	162	5 876	1 362	29 091
Metallurgy and metals transformation	349	5 391	569	5 322	352	3 333	528	5 685	3 696	40 899
Manufacture of electrical and electronic components	169	5 593	146	2 582	132	1 909	131	2 765	1 226	28 972
Production of fuel	116	968	1	s	3	s	5	s	184	2 735
Electricity and gaz supply, collection and distribution of water	628	17 809	225	6 640	101	2 668	92	2 044	2 314	53 676
Construction	5 443	36 260	8 625	36 615	6 261	32 706	5 685	24 429	61 489	256 074
Sale and repair of motor vehicles	1 750	10 903	1 944	10 335	1 457	7 916	1 496	9 329	13 474	76 654
Wholesale trade	7 144	56 374	7 486	44 669	5 305	37 975	3 587	23 071	65 006	315 279
Retail trade, repair	9 548	31 310	11 005	35 262	8 035	30 989	6 702	26 732	95 415	334 617
Transports	3 688	29 291	5 244	47 645	3 381	42 465	3 163	54 697	31 267	336 871
Real Estate activities	3 758	8 737	1 168	2 568	1 775	3 041	1 042	1 966	27 888	44 579
Post and telecommunications	864	33 451	693	12 483	590	13 241	401	7 751	5 880	143 324
Consultancy and assistance activities	22 081	195 983	6 078	29 332	8 212	32 996	5 497	16 743	42 753	578 061
Renting and other business activities	5 627	71 620	2 952	32 794	2 732	29 536	2 181	23 581	40 953	333 640
Research and development	186	2 669	27	1 399	96	2 311	32	47	1 088	12 741
Hotels and restaurants	5 491	28 790	4 406	16 385	3 492	14 542	2 585	15 247	46 336	248 089
Recreational, cultural and sporting activities	3 628	20 619	1 436	4 532	1 222	3 946	779	1 806	26 144	94 425
Personal and domestic services	2 304	5 171	1 759	3 431	1 865	3 659	1 408	2 968	19 383	41 630
Education	1 229	2 113	564	991	680	1 085	593	830	9 446	15 231
Health, social work activities	7 818	8 897	4 831	8 219	5 474	6 589	4 553	6 618	59 010	66 947
Activities of membership organizations and extra-territorial activities	10	7	2	s	3	s	3	s	88	119
TOTAL	87 048	681 490	63 817	347 036	54 735	304 706	43 393	262 716	702 106	3 525 012

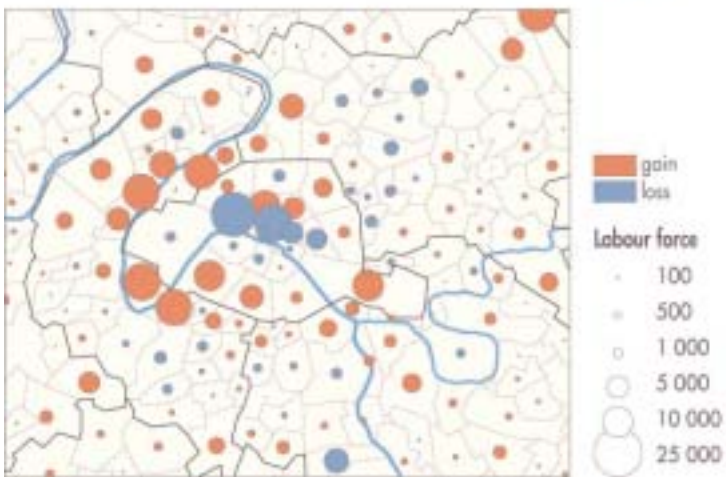
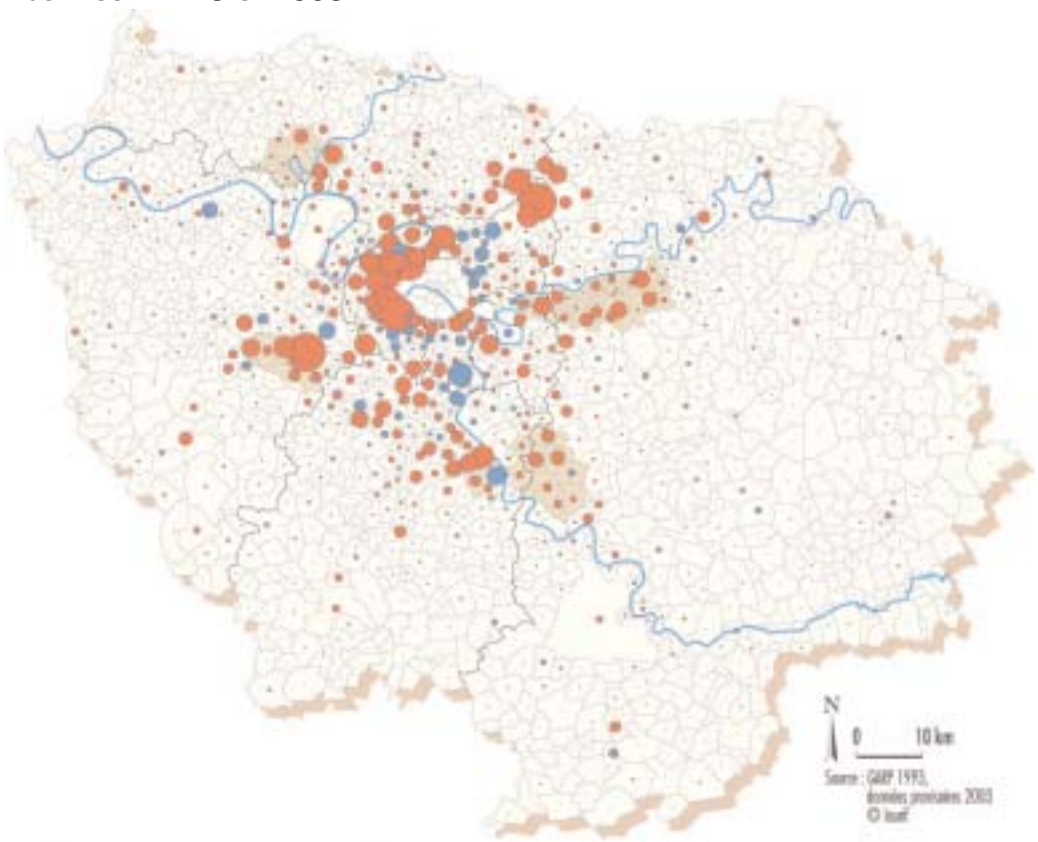
* ITS : Industry, Trade, Services (excluding financial activities)

s : statistical confidentiality

Source : INSEE (French Institute of Statistics), Sirene file

Evolution of salaried employment in the Île-de-France region between 1993 et 2003

Employment and unemployment



> Unemployment

Number of unemployed persons (in the line of the ILO) and unemployment rate

(raw data)

	Number of unemployed	Unemployment rate		
		Île-de-France	Province	Metropolitan France
Total	534 000	10,1 %	9,6 %	9,7 %
Males	297 000	10,6 %	8,3 %	8,7 %
Females	237 000	9,5 %	11,3 %	10,9 %
Less than 25 years	91 000	21,6 %	21,1 %	21,2 %
25 to 49 years	332 000	9,2 %	8,9 %	8,9 %
50 years or more	111 000	8,7 %	6,8 %	7,2 %
Craftsmen, tradesmen	14 000	6,4 %	3,3 %	3,8 %
Managers	70 000	5,2 %	3,4 %	4,1 %
Intermediate professions	77 000	6,2 %	4,7 %	5,0 %
Non manual workers	133 000	8,7 %	9,2 %	9,1 %
Manual workers	114 000	13,6 %	10,5 %	10,8 %
Early School leavers or CEP*	172 000	15,1 %	14,6 %	14,7 %
BEPC, CAP, BEP**	128 000	9,2 %	9,0 %	9,0 %
Bachelor's degree	82 000	9,9 %	8,4 %	8,7 %
Bachelor's degree + 2 years	52 000	7,3 %	5,6 %	6,0 %
High education diploma	100 000	8,2 %	7,3 %	7,6 %

Source : INSEE (French Institute of Statistics), employment survey 2003 *Certificate from primary school ** BEPC : middle school diploma, CAP:vocational training certificate ; BEP:vocational training diploma

Seasonally adjusted unemployment rate *

(in % of the Labour force)

	2 nd quarter 2003	3 rd quarter 2003	4 th quarter 2003	1 st quarter 2004	2 nd quarter 2004
Paris	11,5	11,5	11,6	11,5	11,4
Seine-et-Marne	7,6	7,8	7,9	7,8	8,0
Yvelines	7,5	7,6	7,8	7,8	7,8
Essonne	7,5	7,6	7,7	7,7	7,7
Hauts-de-Seine	9,3	9,3	9,4	9,3	9,5
Seine-Saint-Denis	13,5	13,7	14,0	13,8	14,0
Val-de-Marne	9,2	9,3	9,5	9,5	9,6
Val-d'Oise	9,7	9,7	10,0	9,8	10,2
Île-de-France	9,7	9,8	10,0	9,9	10,0
Province	9,8	9,9	9,9	9,8	9,9
Metropolitan France	9,8	9,9	9,9	9,8	9,9

* See glossary

Source : INSEE (French Institute of Statistics), seasonally revised and adjusted series

Unemployed at June-30-04

	Categories 1, 2 and 3				Category 6
	All	- than 25 years	50 years and +	Long-term	All
Paris	155 889	5,5 %	18,7 %	37,0 %	16 652
Seine-et-Marne	53 286	14,4 %	18,5 %	27,9 %	7 693
Yvelines	56 806	12,0 %	19,3 %	28,9 %	8 558
Essonne	48 588	12,0 %	18,0 %	26,3 %	6 413
Hauts-de-Seine	78 105	8,2 %	18,2 %	31,6 %	9 852
Seine-Saint-Denis	103 612	11,8 %	17,1 %	31,3 %	11 319
Val-de-Marne	65 565	10,2 %	17,8 %	30,4 %	7 578
Val-d'Oise	60 841	13,6 %	17,9 %	28,4 %	8 746
Île-de-France	622 692	10,0 %	18,2 %	31,5 %	76 811
Metropolitan France	2 281 800	16,0 %	15,6 %	30,2 %	481 262

Source : ANPE (National employment Agency)